

International Journal of Scientific Research and Reviews

Multilevel Thresholding for Video Segmentation Using Cuckoo Search Algorithm

Durga R.*¹ and Yamuna G.²

¹Department of ECE, Annamalai University, Tamil Nadu, India
Email: rdurgaphd@yahoo.com, Mobile: +91 97872 13522

²Department of ECE, Annamalai University, Tamil Nadu, India
Email: yamuna.sky@gmail.com, Mobile: +91 98423 99987

ABSTRACT

Nowadays Video Segmentation plays crucial role in the Image Processing domain. A new multilevel thresholding based color video segmentation approach using an objective function named Kapur's entropy. In this paper, segmentation process incorporates two types of cues, i.e., inter-frame consistency, and a cross-video similarity into an optimization using Cuckoo Search (CS) algorithm and motion model, and it does not require objects to be visible in all frames. The Motion Pixel Expectation Maximization (MPEM) and a spatio-temporal Scale-Invariant Feature Transform (SIFT) flow descriptor is introduced to detect the motion pixels and to reduce the probability of disruption by occlusion, clutter, or noise. The spatio-temporal SIFT flow originates reliable estimation of common foregrounds over the entire video dataset. In this paper, Cuckoo Search (CS) optimization algorithm with different parameter analysis has been used for solving the color video multilevel thresholding problem. For this method, CS algorithm is achieved the best solution as fitness function using Kapur's entropy for optimal multilevel thresholding. Segmentation results show that the proposed CS-Kapur's segmentation provides best segmentation results.

KEYWORDS: Video Segmentation, Optimization, Cuckoo Search algorithm, Scale-Invariant Feature Transform (SIFT), Motion Pixel Expectation Maximization (MPEM)

***Corresponding Author:**

R. Durga

Assistant Professor, Department of ECE, Annamalai University,

Annamalai Nagar – 608 002, Tamil Nadu, India

Email: rdurgaphd@yahoo.com, Mobile: +91 97872 13522

INTRODUCTION

The image segmentation plays a vital role in digital image processing. The combination of a finite number of elements, each of which has a particular location and values is known as a digital image. and these elements are called image elements. The term pixel is most widely used to denote the elements/components of a digital image. Advantage of Digital Image Processing,

- *It allows a wide range of algorithms to be applied to the input data.*
- *It avoids noise and signal distortion problems.*

Video segmentation has been a key technique for semantic object extraction and plays an important role in digital video processing, pattern recognition, and computer vision. The task of segmenting/tracking a video object emerges in many applications, such as bank transactions monitoring, surveillance and video conferencing.

Image Segmentation¹ is defined as the process of partitioning or subdividing an image into its constituent region or objects (homogeneous region like color, contour, etc.). In case of color video multilevel thresholding, 3 color bands such as red, green, and blue frames has been considered to obtain the segmented color videos. Thresholding plays a very effective and notable role in the field of segmentation. The most leading problem in thresholding based approach is to select the appropriate (best) threshold value. Thus, many entropy based thresholding techniques have been developed.

RELATED WORK

At present days, many researchers had done work towards video segmentation, and motion detection scheme. The entropy based segmentation is widely adopted by the research in the multilevel thresholding technique. The following paragraphs given the brief survey of literatures based on segmentation techniques,

S. Pare *et al.*², described the color image segmentation technique based on a cuckoo search algorithm and energy curve. They compared two algorithm named Cuckoo Search algorithm (CS) and Egg Laying Radius Cuckoo Search (ELR-CS) algorithm. They applied the CS algorithm using Levy based Kapur's entropy to obtain optimal thresholding values and to improve the accuracy of an image. The energy function method was introduced to extract the Red, Blue, Green channel color space in a curve model. They compared three well known objective functions named Kapur's entropy, between class-variance, Tsalli's entropy. Kapur's entropy gives more accuracy, PSNR values and feature similarity function values than others. The three different thresholding levels used

in this method, i.e. 3, 5, and 8 levels of threading. The Author of this method proved that the performance of CS algorithm is more efficient than the ELR-CS method.

Ashish Kumar Bhandari *et al.*³ described the Cuckoo Search and Wind Driven Optimization algorithm (WDO) using satellite image segmentation. They applied these two algorithms (CS and WDO algorithms) for multilevel thresholding using Kapur's entropy by selecting best optimal threshold values. These algorithms used to obtain the best solution or best fitness value of the initial random threshold value. They also measured the quality factors such as accuracy, PSNR value, SSIM, and FSIM values.

Mohamed Abdel Baset *et al.*⁴ used the Cuckoo Search (CS) and Genetic Algorithm (GA) for optimization problems. The authors proposed the collaborative combination of two algorithms (like CS-GA and GA-CS). They validated these algorithms by using 15 benchmark mathematical functions. In their method, they explained the two algorithms, the CS and GA are more accurate, reliable and efficient at finding a global optimal solution than the other algorithms.

K. Suresh Manic *et al.*⁵, described the multi-thresholding for image segmentation based on Kapur's and Tsalli's entropy. The multi-thresholding is applied for grayscale images (named test images) using Firefly Algorithm (FA) and Kapur's/Tsalli's entropy function. The authors used this algorithm to discover the optimal threshold value. The Kapur's entropy estimated the better quality of an image and Tsalli's entropy reduced the CPU timing.

Peng Yeng Yin⁶ described the Minimum Cross Entropy Threshold (MCET) selection method and particle swarm optimization method. The particle swarm optimization was used to derive multiple MCET. They introduced the MCET in bi-level thresholding case. The main drawback of the MCET is it could be very time consuming in the multilevel thresholding (for a complex image).

Erik Cuevas *et al.*⁷ presented a multi-threshold segmentation based on the Artificial Bee Colony (ABC). The ABC algorithm assumed the existence of a set of operations that may resemble some features of the honey bee behavior. For instance, each solution within the search space comprises a parameter set representing food source locations. They produced the fitness value, that is refers to the food source quality. The process mimics the bee's search for valuable food sources yielding an analogous process for finding the optimal solution. The ABC-based method shows fast convergence and low sensitivity to initial conditions. It also improved the complex time consuming computations that required by gradient-based methods. But the drawback of this algorithm is time consuming when compared to Cuckoo Search algorithm.

M. Mary Synthuja Jain Preetha *et al.*⁸ described the region based segmentation using a Cuckoo Search algorithm. In that, the initial seeds are selected using histogram analysis and regions are grown from the initial seeds based on similarity condition. And the threshold value for region

growing was optimized by using a cuckoo search algorithm. NPR (Normalized Probabilistic Rand Index), GCE (Global Consistency Error) and VOI (Variation of Information) are calculated to find the ground truth images, consistency error, information loss and information gain respectively.

From the above mentioned literature survey, it is proved that the CS algorithm performs better than the other optimization techniques for segmentation scheme. Many of them introduced a CS algorithm for image segmentation whereas in this paper, we proposed a CS algorithm for video segmentation scheme.

METHODOLOGY

Video Segmentation

The video segmentation refers to decomposing a video data into meaningful elementary parts. The result of video segmentation is a set of segments that collectively cover the real entire video data. Video segmentation plays an important role in the video processing. Video Segmentation decomposes image frames into background and foreground.

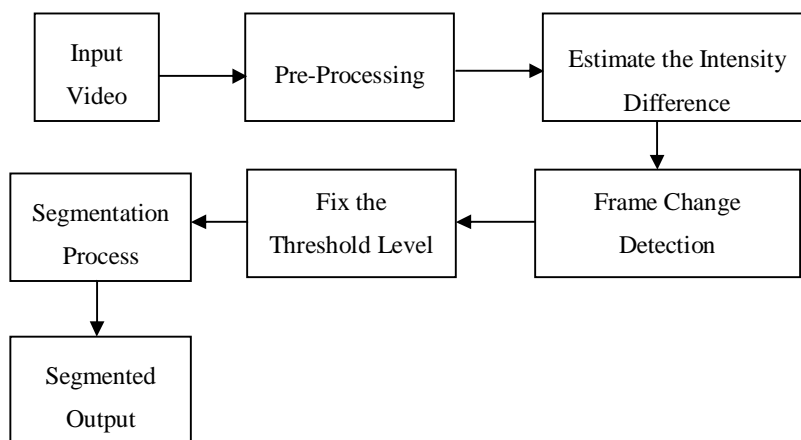


Figure1. Basic Block Diagram of Video Segmentation

Video segmentation is considered as a clustering process that classifies one video succession into several objects/ frames.

Cuckoo Search Algorithm

In the proposed method, the segmentation task is combined with an optimization technique; video segmentation based on the Cuckoo Search algorithm is applied. Cuckoo Search Algorithm is based on the brood parasitism of some cuckoo species. The CS algorithm is improved by using Levy flights, rather than by using plain isotropic random walks. The Cuckoo Search algorithm was motivated by

the cuckoo species (some of them laying their eggs in the host bird's nest). Some of the cuckoos have evolved in a way that, the female parasitic cuckoos can have some similarities in colors and patterns on the eggs of a few chosen host species. This reduces the probability of the eggs being abandoned by the host birds and, it increases their re-production of new ones. The several host birds engage direct conflict with intruding cuckoos.

The first impressions about the cuckoos are their beautiful tone. But independently of their sound, they have a spectacular intrusion reproductive strategy. This is known as brood parasitism. The brood parasitism of cuckoo bird is of two types: non-obligatory and obligatory. Cuckoo lays eggs in the nest of co-specifics (i.e., same species), is then on-obligatory brood parasitism. Examples: Bank Swallows, African Weavers. The cuckoos lay eggs in the nest of hetero-specifics, and do not require building the nest of their own and protects the eggs, this is in obligatory brood parasitism. Examples: Brown-Headed Cowbirds and European Cuckoos. There are different types of brood parasitism, they are: intra specific brood parasitism, cooperative breeding, and nest takeover.

For simplicity in describing the cuckoo search, consider the following three idealized rules:

- (1) Each cuckoo sets one egg at a time and dumps its egg in the randomly chosen nest
- (2) The best nests with high quality of eggs will carry-over to the next generations
- (3) The number of available host nests is fixed and if the egg laid by a cuckoo is discovered by the host bird, then the host bird will abandon the nest or built a new nest.

Based on the above mentioned rules, basic steps of cuckoo algorithm are:

Step 1: Set the number of nests. In this problem, it is taken as 20. Set the discovery rate (probability) and the stopping criteria, which are either fixed number of iterations. Set dimension of the problem, the number of dimensions is the threshold level (here such as 5).

Step 2: Randomly initializes the solution (nest) by generating n different nest for acquiring n different solutions.

Step 3: Evaluate fitness for each of the obtained solutions and find the best nest corresponding to objective function criterion.

Step 4: Start iterations, generate a new nest by Levy flight, but keep the current best nest. A Levy flight is performed through Eq. (1).

For generating new solution, a Levy flight is performed as (1), $x_i(t+1)$ for cuckoo i .

where, $\alpha > 0$ is the step size, which is related to the scales of the problem of interests. In most cases, we can use $\alpha = 1$. The product \otimes deals with entry-wise multiplication process, where, λ represents a scaling parameter. In this problem, λ is selected in the range between $1 < \lambda \leq 3$. λ , which is providing a random walk, while the random step length is outlined from

the Levydistribution, which has an infinite variance with an infinite mean. Levy distribution is given by Eq. (2). Levy flights offers random walk whereas their random step lengths are taken from the Levy distribution for large steps given by, (2)

$$X_i^{(t+1)} = X_i^{(t)} + \alpha \oplus \text{Lévy}(\lambda) \quad (1)$$

$$\text{Levy}(\lambda) = t^{-\lambda} \text{ where } 1 < \lambda \leq 3 \quad (2)$$

Step 5: Evaluate (eq. (1) and (2)) set of solutions and obtain the new fitness value. Compare the old fitness with this new fitness and replace old fitness; if a new fitness value is better than the old one, update the best nest corresponding to fitness (updating the membership matrix).

Step 6: Repeat the above steps until stopping criteria is achieved (by giving the best fitness and corresponding best nest). According to application, Levy flight can be modified. Levy flight has an infinite variance with an infinite mean. The variance of Levy flight can be expressed as,

$$\sigma^2(t) \sim t^{2-\beta} \quad \text{where, } 1 \leq \beta \leq 2 \quad (3)$$

Here, the CS algorithm is used to determine the global optimal threshold value. The main advantage of the Cuckoo Search algorithm is that, it reduces the computational time. In this proposed method, different videos are taken as the input videos. The input video is processed and displayed. Then, the short length video is converted into frames and the intensity variation of the each frame is estimated. The Cuckoo Search algorithm initialization is started by applying a 5th level thresholding to each frame and the thresholding values are discovered in the upper and lower bound segmentation. Thresholding value varies from 0.1 and above, that depends on the videos. The motion pixel in the videos is discovered by the Motion Pixel Expectation Maximization (MPEM) algorithm. By using Levy flights, the step size, current place and transition probability of the next state is estimated.

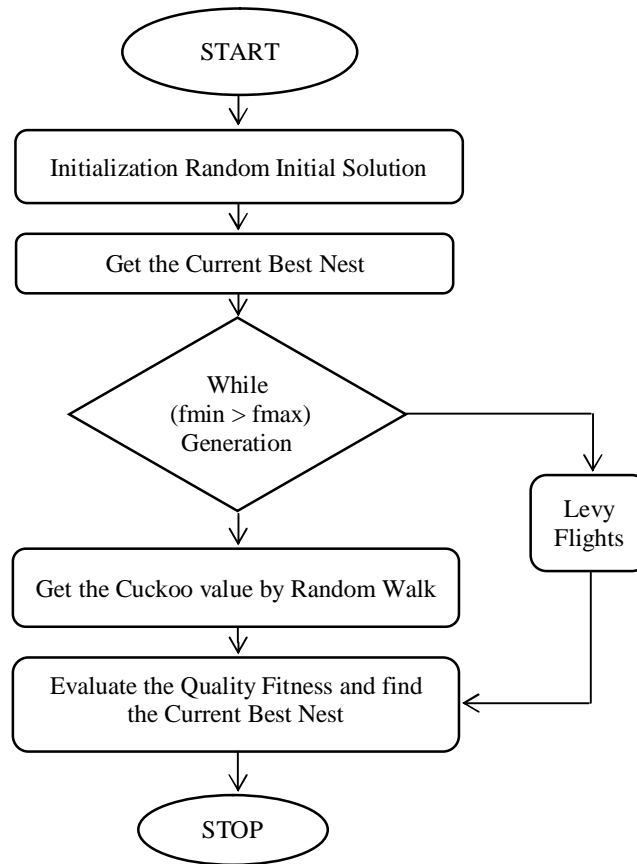


Figure2. Flowchart of Cuckoo Search Algorithm

The overall flowchart of the proposed method is given in Fig.2 and the overall block diagram of the proposed method is given in Fig.3.

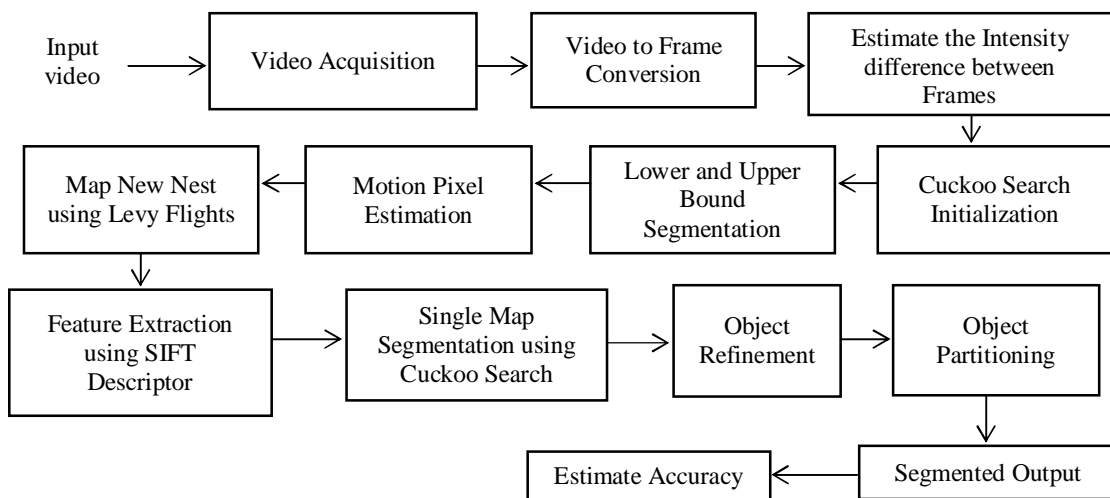


Figure3. Block Diagram of Proposed Method

SIFT algorithm is used to extract the local features (foreground object shape). This algorithm only maps the moving object from the video. Single mapping process, that will only extract the foreground object edge points. Then the object refinement process is applied to eliminate the unnecessary pixels from a frame. If the refinement process is satisfied, then the object partitioning process will perform. If it's not satisfied, then it performs the Cuckoo Search initialization process again until the refinement process satisfied. Then the object is partitioned, an accurate object is obtained at the output. After that the accuracy is calculated from the confusion matrix.

EXPERIMENTAL RESULTS

This section describes the simulation results. In this proposed method, Levy flights which are used in the CS algorithm have been exploited for multilevel thresholding. In this method, threshold levels (m): 3, 5, and 8 level thresholding have been found for the purpose of multilevel thresholding, fidelity assessment, and for visual perception. For all the considered images, the population size (or total number of iterations) of the CS algorithm have been varied. A significant benefit of this algorithm is its easiness. In CS algorithm, discovery rate has been varied at 0.25, and 0.5, where the value of $p_a=0.25$ gave superior results. The number of repeats has been 10 times while simulating the results. The best of 10 times is selected as the optimum value for segmentation. The total length of the videos is 3 secs only. Because increasing the video length, increases the computational time. Then the video is converted into frames.

Four different videos such as Giraffe, Horse Riding, Car, Parrot are used for video segmentation method is shown in figure 4. For CS algorithm, the number of iteration steps obtained for the objective function is shown in figure 5.

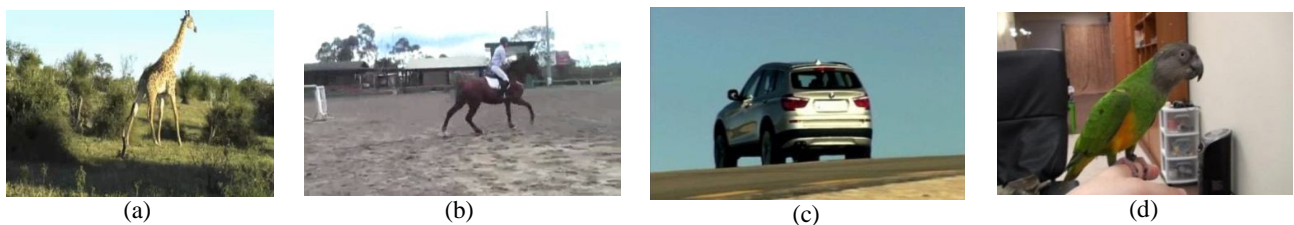


Figure4. Different Input Videos (a) Giraffe (b) Horse Riding (c) Car and (d) Parrot

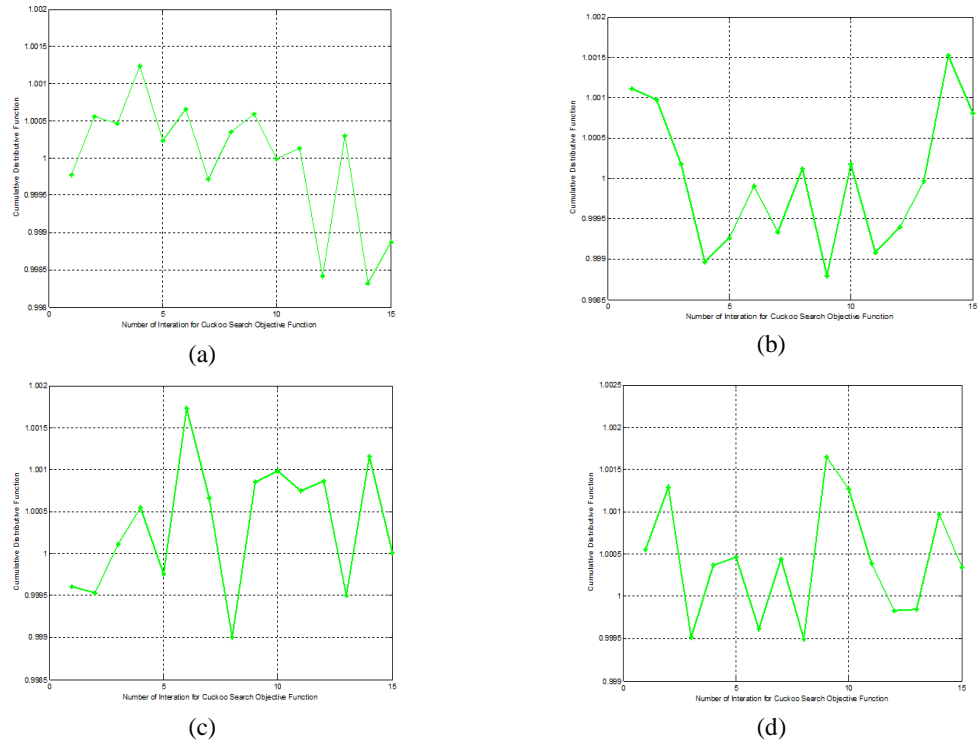


Figure5. Graphical Representation of Iteration Steps for CS Objective Function

(a) Giraffe (b) Horse Riding (c) Car and (d) Parrot

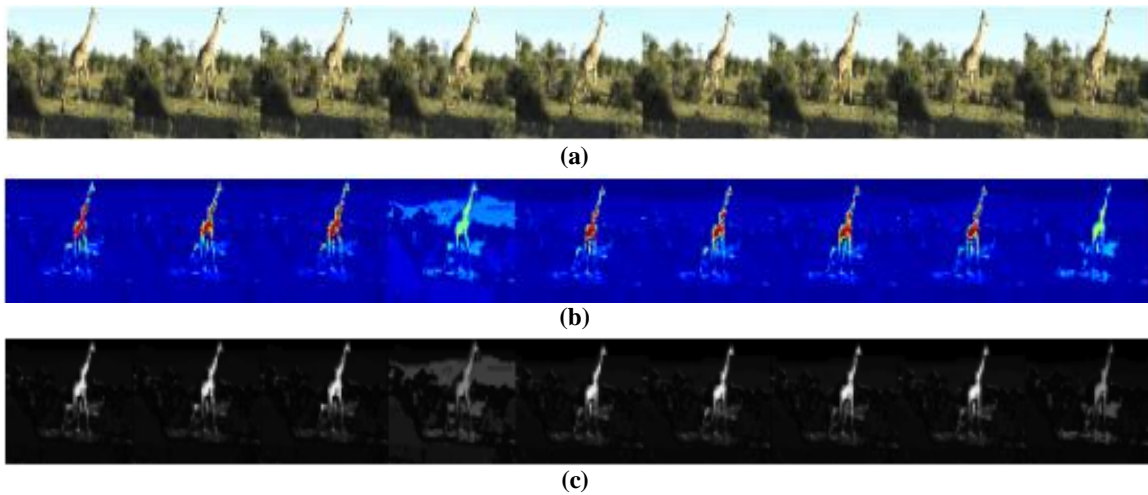


Figure6. (a) Input Sequences, (b) Object Refinement, (c) Multi-Class Video Co-Segmentation for Giraffe Video



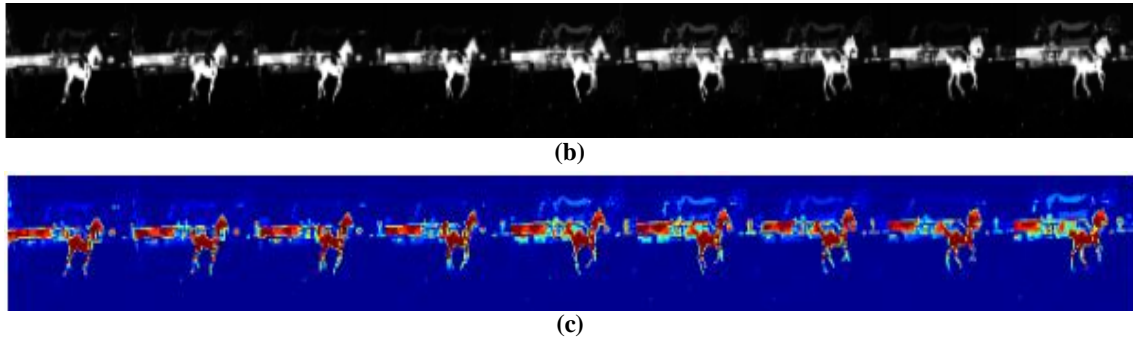


Figure7. (a) Input Sequences, (b) Object Refinement, (c) Multi-Class Video Co-Segmentation for Horse Video

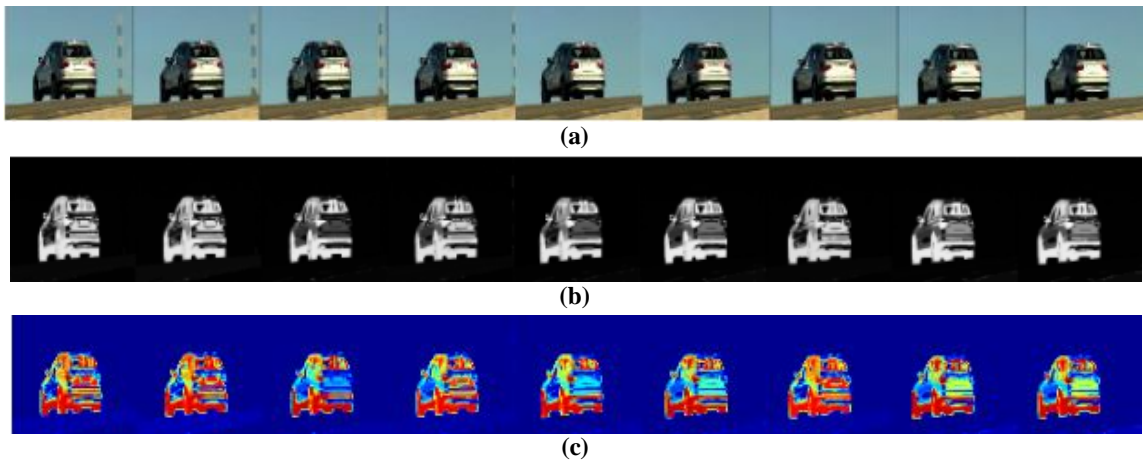


Figure8. (a) Input Sequences, (b) Object Refinement, (c) Multi-Class Video Co-Segmentation for Car Video

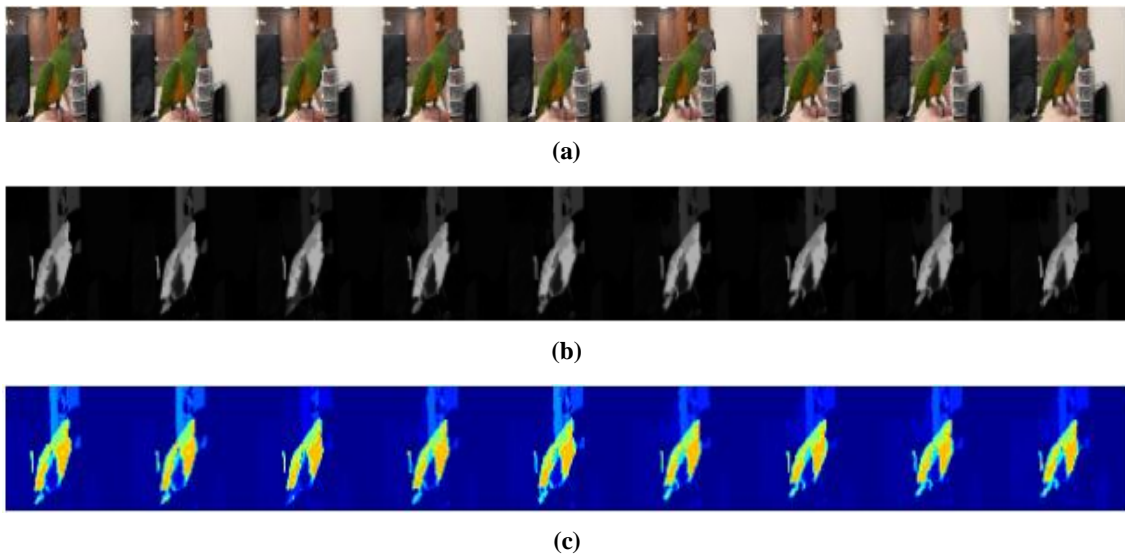


Figure9. (a) Input Sequences, (b) Object Refinement, (c) Multi-Class Video Co-Segmentation for Parrot Video

The figure 6, 7,8 and 9 shows the input sequence of the Giraffe, Horse Riding, Car, Parrot videos, refinement process is used to extract the foreground and background information. And then Multi-class video co-segmentation is applied to addresses the multiple object classes across multiple video data's. First, the 1st frame is considered as a reference frame. Figure 9 shows the segmentation process of the frame. Then CS Kapur's entropy is applied to segment the frames by using 5 level thresholding. The moving pixel from the video is detected by using MPEM algorithm. After detecting the motion pixels, the foreground object is extracted in order to focus the main moving object. The intensity variation of the object is observed and then improving the intensity of each frame by the CS algorithm.

Input Frame with Object	Cuckoo Kapur Segmentation	Motion Pixel Estimation using MPEM	Intensity Variation of Object	Video Segmentation using Cuckoo Search Algorithm	Video Object Co-Segmentation	Visualization of Cuckoo Search with SIFT Flow	Single Mapping Process	Final Accurate Object Segmentation



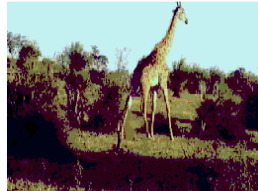









Figure10. Segmentation process of Four Different Videos Such as Giraffe, Horse Riding, Car, Parrot

The video object co-segmentation process is used to segment the common foreground object under similar background. The SIFT flow descriptor is applied to reduce unnecessary pixels present in the frames. After applying the SIFT algorithm, single mapping segmentation is applied to obtain the edge surface of the foreground object. In this proposed method, three different algorithms used to

obtain accurate final video. The accuracy and PSNR values are calculated from the final optimized output. This technique is straight forward models, which can be merely applied to any type of optimization problem. The CS algorithm controls the boundary conditions in every computation step. The Levy flights algorithm is more efficient method of discovering the search space.

The proposed technique is used to determine the multiple threshold levels (m). The three different level of thresholds are compared in the Table I is shown below, three threshold levels i.e. m = 3, 5, 8 levels are tested. From this tabulation, the 5th level of threshold gives more accurate results than the other threshold levels.

Table I: Comparison of Four Videos for Multiple Threshold Levels (m)

Videos	Threshold Levels		
	m=3	m=5	m=8
Giraffe			
Horse Riding			
Car			
Parrot			

A. Evaluation Metrics

In this experimental section, different well known image processing metrics such as PSNR, MSE, structural-similarity index (SSIM), and feature similarity index metrics (FSIM) have been used. PSNR and MSE directly depend on the image intensity values, and usually indicate the strength and accuracy of final reconstructed signal or image. On the other hand, SSIM and FSIM are exploited to measure similarity among the segmented images (computed as a result of multilevel thresholding process carried out by different objective functions) and original images.

Performance of the algorithms has been measured in terms of following significant parameters:

$$MSE = \frac{1}{MN} \sum_{i=1}^M \sum_{j=1}^N [I(i, j) - \tilde{I}(i, j)]^2 \quad (4)$$

where,

M, N - size of image *I* and \tilde{I} - Original image and Thresholded image at particular level

i, j - Pixel range in the rows and Pixel range in the column.

$$PSNR = 20 \log_{10} \left(\frac{255^2}{MSE} \right) \quad (5)$$

The Peak Signal to Noise Ratio (PSNR) is the proportion between maximum attainable powers and corrupting noise that influence likeness of image. PSNR is usually précised as decibel scale. The PSNR is usually used as measure of quality rebuilding of image. The signal in this case is original data and the noise is the error imported. High value of PSNR signifies the high Quality of image. Excellent values range of PSNR is from 30 to 50 dB, but the acceptable range is 25dB.

SSIM is an image quality assessment, based on the degradation of structural information. The SSIM is used to compare the structures of original and thresholded image. The SSIM index is computed as:

$$SSIM(X, Y) = \frac{(2\mu_x\mu_y + C_1)(2\sigma_{xy} + C_2)}{(\mu_x^2 + \mu_y^2 + C_1)(\sigma_x^2 + \sigma_y^2 + C_2)} \quad (6)$$

where, μ_x and μ_y stands for mean intensity of image of x and y respectively.

σ_x and σ_y indicates the standard deviations of x and y respectively.

σ_{xy} is the local sample correlation coefficient between x and y.

C1 and C2 are the constants, and are included to avoid instability when they are very close to zero. Here, C1 = C2 = 0.065.

The SSIM can take the values in [-1, 1] range, and a higher value of SSIM shows better performance. The SSIM metric can be extended for true color RGB images as following:

$$SSIM = \sum_c SSIM (X^c, Y^c) \quad (7)$$

FSIM is used to compute feature similarity between the input and processed frame, which is formulated as:

$$FSIM = \frac{\sum_{x \in \Omega} S_L(X) PC_m(X)}{\sum_{x \in \Omega} PC_m(X)} \quad (8)$$

where, Ω represents the entire image,

$S_L(x)$ indicates similarity between the threshold image and original image.

The FSIM metric can be extended for true color RGB images as following:

$$FSIM = \sum_c FSIM (X^c, Y^c) \quad (9)$$

Here, x^c, y^c corresponds to c^{th} channel of the original image and multilevel thresholded image; And c stands for channel number (i.e., $c = 1, 2, 3$ in true color RGB images).

B. Model Calculation

Here, the Giraffe video's feature values are taken for the model calculation is given below,

TN = 0.8, TP = 0.9, FN = 0.02, FP = 0.04

Accuracy = (TP + TN) / (TP + FP + FN + TN)

= (0.9 + 0.8) / (0.9 + 0.04 + 0.02 + 0.8)

= 0.9659900 x 100

= 96.5910 %

Sensitivity = TP / (TP + FN)

= 0.9 / (0.9 + 0.02)

= 0.978261 x 100

= 97.8261 %

Specificity = TN / (FP + TN)

= 0.8 / (0.04 + 0.8)

= 0.952385 x 100

= 95.2385 %

where,

TN – True Negative TP – True Positive FN – False Negative FP – False Positive

Table II shows the comparison of various fidelity parameters for the discovery rate of $p_a=0.25$ and $p_a= 0.5$, in which 0.25 value gives better results than 0.5 p_a value (i.e.) the computational time of CS and objective function values (p_a – Discovery rate of the cuckoo’s egg). Table III shows the comparison of various fidelity parameters such as PSNR, MSE, SSIM, FSIM, for $p_a = 0.25$. Table IV shows the comparison of the CS processing time and objective function results for different threshold levels. This table proved the fact that, the 5th level of threshold gives best output accuracy than other threshold levels.

Table II: Comparison of Various Fidelity Parameters for Different Values of p_a Computed

Videos	Thresholding Levels								
	M=3			m=5			m=8		
	Objective Function Result	Time (secs)	Elapsed Time (secs)	Objective Function Result	Time (secs)	Elapsed Time (secs)	Objective Function Result	Time (secs)	Elapsed Time (secs)
Giraffe	57.724	3.3564	14.747471	84.411	4.2087	11.882284	54.4502	7.9350	22.902545
Horse Riding	68.282	3.6059	19.085828	71.604	3.8550	14.440880	57.724	10.3406	28.607576
Car	83.594	2.8977	8.767347	90.190	3.6079	7.643982	57.182	7.2338	11.668418
Parrot	54.166	5.7755	11.848218	93.497	3.6013	11.376371	54.4502	9.4272	20.273475

by CS Algorithm Using Kapur’s Entropy

Table III: Comparison of CS Processing Time for Different Threshold Levels

Videos	pa	Thresholding Level	Proposed Method						
			Objective Function Result	Time (secs)	Elapsed Time (secs)	PSNR	MSE	SSIM	FSIM
Giraffe	0.25	5	84.411	4.2087	11.882284	50.654	3.5215	0.64583	0.79419
Horse Riding		5	71.604	3.8550	14.440880	45.899	4.6302	0.69644	0.84624
Car		5	90.19	3.6079	7.643982	52.572	3.1533	0.8104	1.0055
Parrot		5	93.497	3.6013	11.376371	63.503	1.6808	0.7358	0.94864
Giraffe	0.5	5	75.144	4.3815	15.107550	50.654	3.5215	0.64583	0.79419
Horse Riding		5	51.698	4.4070	15.765377	45.899	4.6302	0.69644	0.84624
Car		5	72.414	6.6763	20.245844	52.572	3.1533	0.8104	1.0055
Parrot		5	74.6259	5.6209	11.730543	63.503	1.6808	0.7358	0.94864

TABLE IV: Comparison of Various Fidelity Parameters for the value of pa =0.25 by

For proposed method with pa = 0.25											
Videos	Cuckoo Search Objective Function	Time (secs)	CS Threshold values	Elapsed time (secs)	PSNR	MSE	SSIM	FSIM	Specificity	Accuracy	Sensitivity
Giraffe	84.411	4.2083	0.8510	11.8823	97.8261	97.8261	97.8261	97.8261	97.8261	97.8261	97.8261
Horse Riding	97.8263	97.8263	97.8263	97.8263	97.8263	97.8263	97.8263	97.8263	97.8263	97.8263	97.8263
Car	97.8265	97.8265	97.8265	97.8265	97.8265	97.8265	97.8265	97.8265	97.8265	97.8265	97.8265
Parrot	97.8262	97.8262	97.8262	97.8262	97.8262	97.8262	97.8262	97.8262	97.8262	97.8262	97.8262

CS Algorithm using Kapur’s Entropy

CONCLUSION

In this paper, a multilevel thresholding based Cuckoo Search (CS) algorithm is applied in video segmentation scheme. Here, the Cuckoo Search algorithm is achieved to generate the optimal thresholding value. In this method, multilevel thresholding based Cuckoo Search algorithm have been reduced the computation inefficiency. When the number of thresholds increases, the thresholding performance is qualitatively better. However, the computation time increases is direct

proportional to the increase in number of thresholds. There are three different levels of thresholds is applied in the segmentation, they are 3, 5, and 8 level of threshold.

When compared to other levels of thresholding, the 5 level gave an accurate segmented result for different videos that is clearly showed in the table. To detect the change detection of the inter-frame differences, MPEM (Motion Pixel Expectation Maximization and SIFT (Scale Invariant Feature Transform) algorithm is captured the moving pixel and the local feature of each frame. The cuckoo Search algorithm and SIFT combination have giving the best accurate object segmentation in video. The results of CS-Levy technique are better in terms of feature.

A review of Tables II,III and IV reveals that CS based video segmentation has obtained the best CPU time, PSNR, MSE, SSIM, and FSIM values for all the video and also at all threshold levels. Furthermore, Kapur's entropy using CS algorithm provides best segmented results for all the test videos and the discovery rate value of $p_a = 0.25$ have given superior results. The main advancement of proposed method is the capability to preserve the useful feature after segmentation process.

REFERENCES

1. S. Pare, A. Kumar, V. Bajaj, G.K. Singh, "A Multilevel Color Image Segmentation technique based on Cuckoo Search Algorithm and Energy Curve", Applied Soft Computing 2016; 1568-4946.
2. Ashish Kumar Bhandari, Vineet Kumar Singh, Anil Kumar, and Girish Kumar Singh, "Cuckoo Search Algorithm and Wind Driven Optimization based study of Satellite Image Segmentation for multilevel thresholding using Kapur's entropy", Expert Systems with Applications 2014; 41: 3538–3560.
3. Mohamed Abdel-Baset, and Ibrahim Hezam, "Cuckoo Search and Genetic Algorithm Hybrid Schemes for Optimization Problems", Appl. Math. Inf. Sci., 2016; 3:1185-1192.
4. K. Suresh Manic, R. Krishna Priya and V. Rajinikanth, "Image Multi-thresholding based on Kapur/Tsallis Entropy and Firefly Algorithm", Indian Journal of Science and Technology 2016; 9 (12).
5. Peng-Yeng Yin, "Multilevel minimum cross entropy threshold selection based on Particle Swarm Optimization", Applied Mathematics and Computation 2007; 184: 503–513.
6. Erik Cuevas, Felipe SenciónEchauri, Daniel Zaldivar and Marco Pérez-Cisneros, "A Multi-threshold Segmentation Approach Based on Artificial Bee Colony Optimization", Applied Intelligence 2012; 37 (3): 321-336.

7. Mary Synthuja Jain Preetha M., Padma Suresh . L., and John Bosco M., “*Region Based Image Segmentation using Cuckoo Search Algorithm*”, Journal of Chemical and Pharmaceutical Sciences 2016; 9 (2).
 8. Pal N.R. and Pal S.K., “*A Review on Image Segmentation Techniques,*” Pattern Recognition. 1993; 26: 1277– 1294.
-